

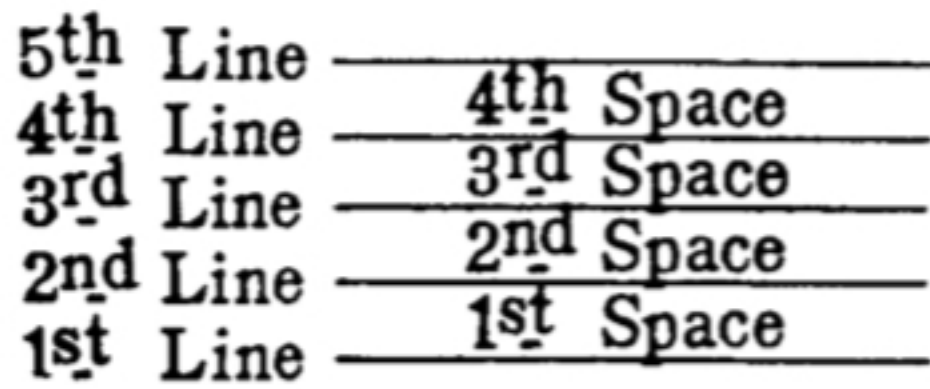
Introduction to Music

NOTE



A symbol used to express a musical sound or tone.

STAFF



Five lines and four spaces to indicate the pitch (high or low) of a musical tone.

LINE NOTE



So called when the line runs through the middle of the note.


SPACE NOTE



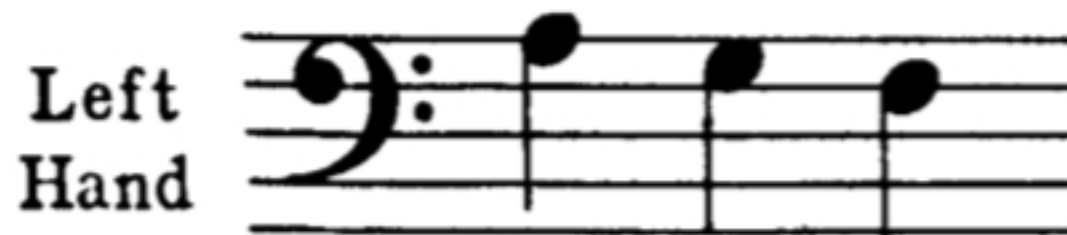
So called when the note is between the lines on a space.


TREBLE CLEF



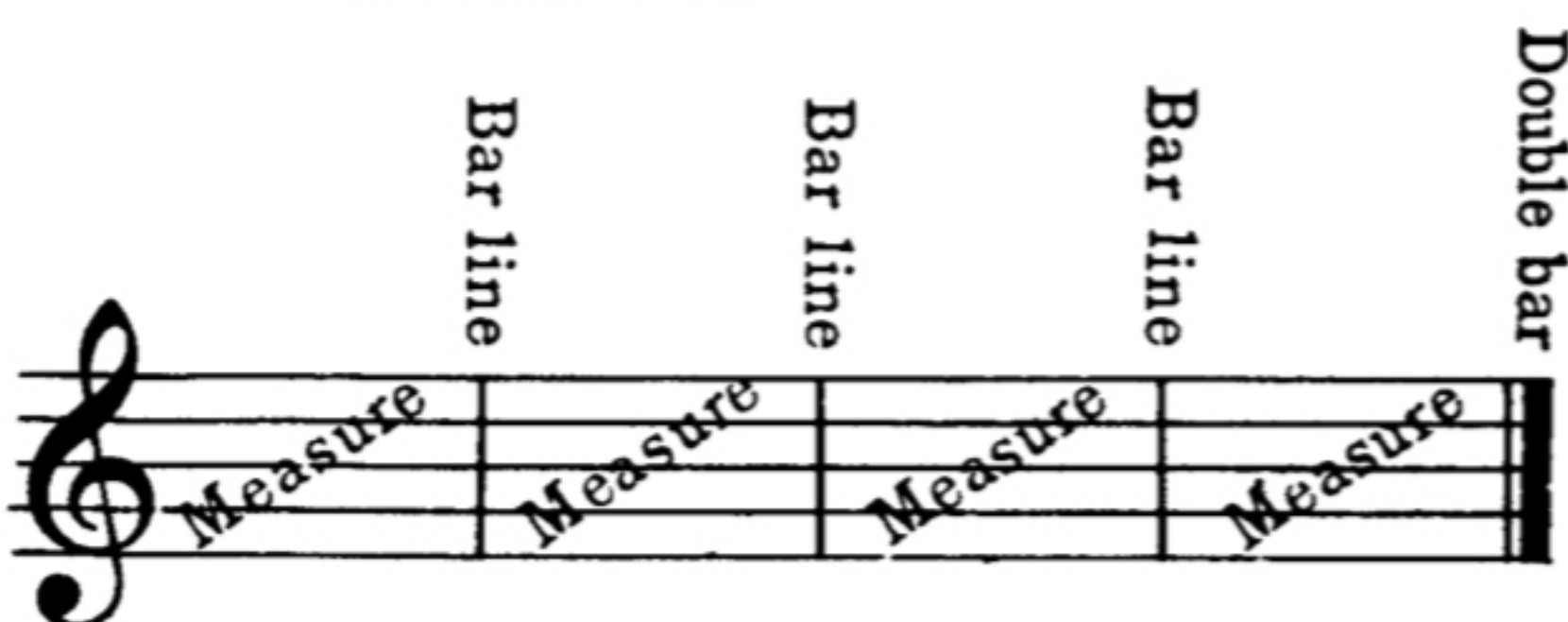
The treble clef sign () indicates the right half of the piano keyboard (usually played with the right hand).

BASS CLEF



The bass clef sign () indicates the left half of the piano keyboard (usually played with the left hand).

MEASURES



Music is divided into MEASURES, each usually containing a similar number of beats or counts. Each measure is separated by a BAR LINE. A DOUBLE BAR LINE shows the end of a piece.